

700mm LOG CUTTING SAW INSTRUCTION MANUAL



MODEL NO.BL900E



CAUTION: Read Manual Thoroughly

Before Operation



1. Please read first!

These instructions have been written in a way which facilitates learning of how to safely operate your saw. Here is a guide on how you should read these instructions:

- Read these instructions before use. Pay special attention to the safety instructions
- These instructions are intended for persons having a basic technical knowledge of the operation of machines such as the one described herein. If you have no experience whatsoever, we strongly recommend to seek the advice of an experienced person.
- Keep all documents supplied with this machine for future reference. Retain proof of purchase in case of warranty claims.
- If you lend or sell this machine to be sure to have all machine documents supplied go with it.
- The equipment manufacturer is not liable for any damage resulting from neglect of these operating instructions.

Information in these instructions is denoted as under:



Danger!

Risk of personal injury or environment damage.



Caution!

Risk of material damage.



Note:

Additional information.

2.Safety

2.1 Specified conditions of use

This machine is only intended for cutting firewood as detailed in these instructions. Any other use is not as specified. Unspecified use, modifications to the machine, or use of parts not tested and approved by the equipment manufacturer may cause unforeseeable damage!

This machine is intended for operation by ONE person. Other persons shall keep a sufficient distance to the machine.

Observe the permissible dimensions of logs to be cut (see "Technical Specifications").

Never cut several workpieces at the same time-and also no bundles containing several individual pieces. Risk of personal injury if individual pieces are caught by the saw blade uncontrolled. Never cut log containing the following:

- ropes
- strings
- cords

Do not overload machine--use it only within the performance range it was designed for (see "Technical specifications")

Use this machine out of doors only.

2.2 General safety instructions

When using this machine observe the following safety instructions, to exclude the risk of personal injury or material damage.

Please also observe the special safety instructions in the respective chapters; where applicable, follow the legal directives or regulations for the prevention of accidents pertaining to the use of circular saw.



General hazards!

1. Be alert. Know what you are doing. Set out to work the reason. Do not operate machine while under the influence of drugs, alcohol or medication.
2. Keep your work area tidy-a messy work area invites accidents.
3. Regularly clear the work area of the cut logs.
4. Prevent adverse body positions. Ensure firm footing and keep your balance at all times.

5. Consider environmental effects:

Provide proper lighting.

Do not operate machine near inflammable liquids or gases.

This machine shall only be started and operated by a person familiar with circular saw and who is at all times aware of the dangers associated with the use of such machine.

Keep bystanders, particularly children, out of the danger zone. Persons under 18 years of age shall use this machine only in the course of their vocational training, under the supervision of an instructor.

Do not permit other persons to touch the machine while it is running.



Risk of personal injury and crushing by moving parts!

Do not operate the machine without installed guard.

Keep sufficient distance to driven components when operating the machine.

Ensure the machine is disconnected from power supply before servicing.

Ensure that when engine starts (e.g. after servicing) no tools or loose parts are left on or in the machine.

Turn engine off if the machine is not used.



Hazard generated by modification of the machine or use of parts not tested and approved by the equipment manufacturer!

Use only parts approved by the equipment manufacturer. This applies particularly to:

- Saw blade (see "Technical specifications")
- Safety devices (see "Spare parts list")

Do not change any parts.



Hazard generated by machine defects!

Keep machine and accessories in good repair. Observe the maintenance instructions. Before any use, check machine for possible damage: before operating the machine, all safety devices, protective guards or slightly damaged parts need to be checked for proper function as specified. Check to see that all moving parts work properly and do not jam. All parts must be correctly installed and meet all conditions necessary for the proper operation of the machine.

Damaged protection devices or parts must be repaired or replaced by a qualified specialist.

Keep handles free of oil, grease and resin.

2.3 Safety devices

Motor protection

The engine motor protection stops the motor by over-current detection, should the motor be locked (e.g. by a jamming saw blade)

Motor brake

The motor brake brakes the saw blade after the machine has been turned off. With an intact motor brake the post-running of the saw blade shall not exceed 10 seconds.

The feed rocker allows for a safe feeding of the logs to be cut. When the feed rocker is released it must automatically return to its starting position.

Blade guard

During operation the blade guard must always be installed. It must not show any signs of damage.

2.4 Warning symbols

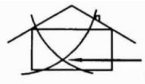


Danger!

Disregard of the following warning could lead to severe personal injury or material damage.



Wearing hearing protection.



Use this machine out of doors only.

3. Machine installation

3.1 Unpacking



Danger!

Hazard generated by missing parts!

To prevent accidental starting that could cause possible serious personal injury, assemble all parts to your machine before connecting it to power supply. This machine should never be connected to power supply when you are assembling parts, making adjustments, installing.

Carefully remove all parts from the carton and place the machine on a level work surface. Separate and check against the list of loose parts.

If any parts are missing, do not operate this machine until the missing parts are replaced. Failure to do so could result in serious personal injury.

Do not discard the packing materials until you have carefully inspected the machine, identified all parts, and satisfactorily operated this machine. _____



Note:

If any parts are damaged or missing, do not attempt to plug in the power cord and turn the engine off until damaged or missing parts are obtained and are installed correctly.

4.Operation

Please take note of the following safety information before operating the machine!

Also follow the safety instructions given at the beginning of this manual!



Hazard generated by machine defects!

Before starting work, check to see that the following are in proper working order:

1. Saw blade (firmly mounted? Undamaged? Sharp? Sufficient distance to other parts?)
2. Blade guard (Undamaged? Sharp? Sufficient distance to other parts?)
3. Feed rocker (must automatically return to the starting position)
4. Power cable, power cable plug and switch (if damaged, have replaced to a qualified electrician)
5. Motor brake (after switching OFF maximum 10 seconds post-running of saw blade)



Risk of injury by inhaling wood dust!

Dust of certain timber species (e.g. oak, beech, ash) can cause cancer when inhaled:

1. Work only out of doors.
2. When working, take care that as little wood dust as possible will get into the surroundings.
3. Remove wood dust depositions in the work area (do not blow away!)



Hazard generated by insufficient personal protection gear!

1. Wear suitable work clothing, providing protection against falling logs.
2. Wear hair protection.
3. Wear safety glasses.
4. Wear dust mask.
5. Wear non-slip safety shoes.
6. Take care that no parts of your body or clothing are caught by rotating components (do not wear ties or loose fitting garment, contain long hair with a hairnet)



Risk of personal injury and crushing by moving parts!

1. Do not operate the machine without installed guards.
2. Keep sufficient distance to driven components when operating the electric tool.
3. Do not remove small cutoffs, splinters, etc. from near the rotating saw blade by hand.
4. Always use the feed rockers to feed the logs to be cut.
5. Always hold the feed rockers with both hands at its handle.
6. Assume proper operating position:
 - At the front of the saw;
 - In the front of the saw;
 - Offset to the line of cut.

7. After each cut return the feed rocker completely to its starting position.



Hazard generated by pieces of wood being hurled away!

1. Always place curved logs on the feed rocker with the curved side facing the saw blade.
2. Do not jam the logs to be cut.
3. Do not attempt to stop the saw blade by pushing the workpiece against its die.
4. Always use sharp saw blades.
5. If in doubt, inspect the logs for foreign matter (e.g. nails or screws).
6. Never cut several logs at the same time-- and also no bundle containing several individual pieces. Risk of personal injury if individual pieces are caught by the saw blade uncontrolled.

4.1 Cutting

1. Start machine and let the motor reach full speed.
2. Place a log on the feed rocker.
3. To make the cut, push the feed rocker with both hands at the handle towards the saw blade:
 - Exert only so much pressure that the motor speed does not fall off.
 - Push feed rocker forward until it hits the stop.
4. Return feed rocker completely to the starting position.



Note:

If the log was not completely separated, turn it over and repeat the cutting operation from the opposite side (reversing cut).

5. Remove the cut off piece from the feed rock- make next cut...
6. If no further cutting is to be done immediately afterwards, turn machine OFF.

5. Care and maintenance



Danger!

Prior to all servicing:

- Turn machine OFF;
 - Wait for saw blade to complete stop;
1. Check that all safety devices are operational again after each service.
 2. Replace damaged parts, especially safety devices, only with genuine replacements parts since parts not tested and approved by the equipment manufacturer can cause unforeseeable damage.
 3. Repair and maintenance work other than described in this section should only be carried out by qualified specialists.

5.1 Saw blade change



Danger!

Directly after cutting the saw blade can be very hot- burning hazard! Let a hot saw blade cool down. Do not clean the saw blade with combustible liquids. Risk of injury, even with the blade at standstill. Wear gloves when changing blades.

When assembling, observe the direction of rotation of saw blade!

1. Loosen 3 bolts fixing the outer blade guard, and remove the outer blade guard.
2. Hold outer flange with spanner and loosen the nut by spanner.
3. Remove the nut and outer flange from the saw spindle.
4. Take the saw blade off the saw spindle.
5. Clean clamping surfaces of:
 - saw spindle;
 - Inner flange;
 - Saw blade;
 - Outer blade flange;
 - nut.



Danger!

Do not use cleaning agents (e.g. To remove resin residue) which could corrode the light alloy components; this can have an adverse effect on the machine's stability.

Do not clean the saw blade with combustible liquids.

6. Install new saw blade, observing the direction of rotation.



Danger!

Use only saw blade conforming to the technical specifications and EN847-1-parts of unsuitable or damaged saw blades may be hurled away explosive-like.

Do not use:

- saw blades made of high speed steel (HS or HSS);
- saw blades with visible damage;
- cut-off wheel blades.

5.2 Saw storage



Danger!

Store saw so that

- it can not be started by unauthorized persons, and
- nobody can get injured.



Caution!

Do not store saw unprotected outdoors or in damp environment.



Note:

Always install the transport brace before transporting the saw.

To keep the saw blade from rusting, spray with cleaning and maintenance spray (optional accessory) before storing it for a longer time.

5.3 Maintenance

Every 50 ours of operation

Check all screwed connection,tighten if necessary (Rocker and rocker stop must remain movable).

Check saw blade for firm seat,wear and sharpness.

Remove any deposits that may have buildup inside the saw blade cover.

6. Technical specifications

6.1 advantage:

GASOLINE ENGINE LOG SAW;EASILY MOVE;USAGE AT ANYWHERE;

DON'T BE LIMITED BY ELECTRICITY;

TUNGSTEN CARBIDE TIP BLADE;

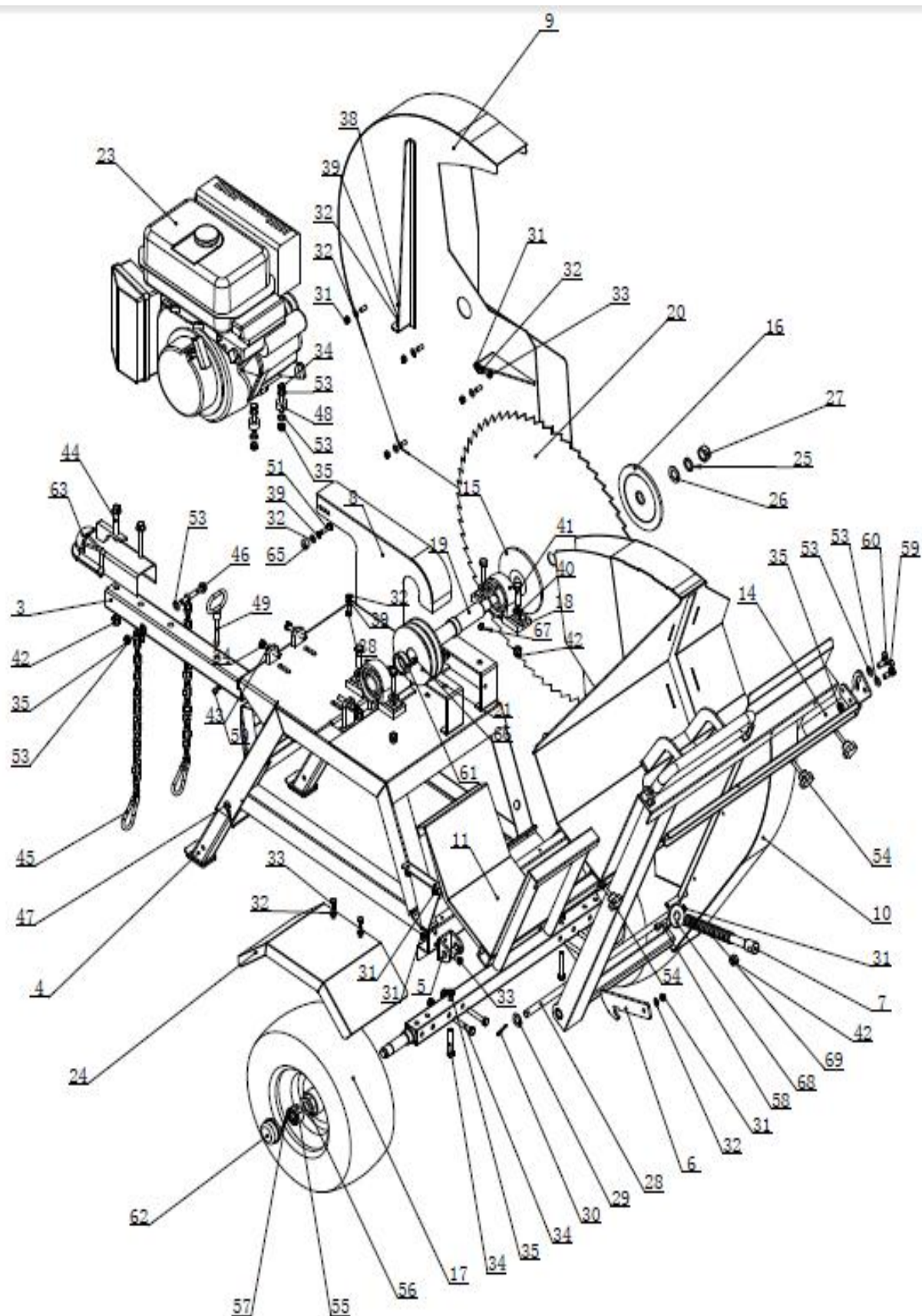
6.2. Log saw function

Max. Length of log to cut	1.15meter
Coupler Size	50mm
Operation height	125cm
Blade	700x30x3mm, 64Z
Wheel	400mm diameter size wheel, 200mm rim, TUBELESS, 4.8-8 highway usage, 40M/h
N.W./ G.W.	193.00/234.00kgs
Products Size (L x W x H)	1050x 850x 1100mm
Packing size (L x W x H)	1100 x 710x 1120mm/1PLT

6.3.Other Details:

Engine	Kohler CH440, single-cylinder, air-cooled, 4 strokes OHV single cylinder, horizontal shaft
Bore x stroke	77mm x 58mm
Displacement	270ml
Compression ratio	8.2:1
Max. Power output	6.6kw/4000rpm
Fuel tank capacity	6.0L
Engine oil capacity	1.1L
Fuel consumption	374G/kw. H
Start type	Electric start

7.Exploded view



8.Parts list

Part No.	Stype	Name	Specification	Quantity
1	YMJ700-1	Base Frame		1
2	YMJ700-1.2	Axle		1
3	YMJ700-1.3	Draw Bar		1
4	YMJ700-1.4	Support Leg		2
5	YMJ700-1.5	Tumbler Installation Plate		2
6	YMJ700-1.6	Tumbler Lock Plate		1
7	YMJ700-1.7	Spring Shaft		1
8	YMJ700-1.8	Belt Cover		1
9	YMJ700-2	Blade Cover		1
10	YMJ700-3	Tumbler		1
11	YMJ700-3.2	Tumbler Extended Board		1
12	YMJ700-3.3	Pressure Handle		1
13	YMJ700-3.4	Scaleplate		1
14	YMJ700A-3.5	Scale Roof		1
15	YMJ700-1.10	Blade Fixed Disk		1
16	YMJ700-1.11	Blade Clamping Plate		1
17	16X6.5-8	Tyre		2
18	GB/T 7810-1995	Bearing		2
19	YMJ700-1.9	Principal Axis		1
20		Blade		1
21	YMJ700-1.12	Large Belt-wheel		1
22	YMJ700-1.13	Small Belt-wheel		1
23		Engine		1
24	P610-03-1.20	Fender		2
25	GB/T 93-1987	Standard Elastic Washer	20	1
26	GB/T 95-2002	Flat Washer C	20	1
27	GB/T 41-2000	Hexagon Nut	M20	1
28	YMJ700-1.15	Tumbler Shaft		1
29	GB/T 95-2002	Flat Washer C	16	2
30	GB/T 91-2000	Split Pin	4X40	2
31	GB/T 889.1-2000	Prevailing Torque Hexagon Nut	M8	17
32	GB/T 95-2002	Flat Washer C	8	16
33	GB/T 5781-2000	Hexagon Headed Bolt	M8X16	9
34	GB/T5781-2000	Hexagon Headed Bolt	M10X60	14
35	GB/T 889.1-2000	Prevailing Torque Hexagon Nut	M10	12
36	GB/T 95-2002	Flat Washer C	6	1
37	GB/T 93-1987	Standard Elastic Washer	6	1
38	GB_T 5781-2000	Hexagon Headed Bolt	M8X20	3

39	GB/T 93-1987	Standard Elastic Washer	8	5
40	GB/T 95-2002	Flat Washer C	12	4
41	GB/T 5781-2000	Hexagon Headed Bolt	M12X45	4
42	GB/T 889.1-2000	Prevailing Torque Hexagon Nut	M12	7
43	GB/T 41-2000	Hexagon Nut	M10	4
44	GB/T 5789-1986	Hexagon Flange Bolt	M12X75	2
45	IMS-B001	Security Chain		2
46	GB/T 5789-1986	Hexagon Flange Bolt	M10X75	1
47	778916	Pin D type		2
48	P610-03-1.39	Engine Rubber Mat		4
49	12397.1	Drawing Pin		1
50		Pin B tyre	φ2.5	1
51	GB_T 5781-2000	Hexagon Headed Bolt	M8X30	2
52	GB_T96-2002	Big Plain Washer	10.5X30X2	1
53	GB/T 95-2002	Flat Washer C	10	12
54		M8 Five-star Handle		3
55	GB/T 6181-1986	Hexagon Thin Slotted Nut	M24	2
56		Flat Washer	26X45X3	1
57	GB/T 91-2000	Split Pin	4X50	2
58	GB/T 70.1-2000	Hexagon Socket Cap Screw	M8X30	1
59	GB/T 5781-2000	Hexagon Headed Bolt	M10X25	1
60		Thumbscrew	M10X20	1
61	YMJ700-1.16	Spacer Bush		1
62		Dust Cover		2
63		Hitch Ball		1
64	YMJ700-3.3.3	Tumbler Holding Screw		2
65	YMJ700-1.8.1	Belt Cover Casing		1
66	GB/T 1096-2003	Parallel Key	10×30	1
67	GB/T 1096-1979	Parallel Key	8X12	1
68		Flat Washer	20X50X3	1
69		Spring		1